

SES Lusaka & Kitwe Clinics: Scope of Services

Our SES Clinics provide the following services, among others

General



GP and family physician



**Preventative and routine
services**



**Chronic disease
management**



Holistic care



Diabetic teaching



Nutritional services



**Exercise and obesity
counselling**



ECGs



Wellness medicals

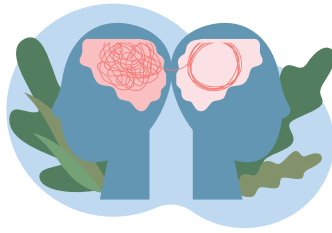


General paediatric and infant care

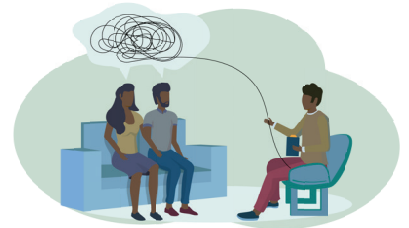
Mental Health



Stress management



**Onward referral to psychiatry
if required**



Relationship counselling



**Recognition and ongoing care of mood
and anxiety disorders**



**Recognition and onward referral, as
well as ongoing support, for alcohol and
substance addiction**

Men's Health

Age-specific men's annual medicals



Erectile dysfunction



General sexual health



Dermatology



Biopsies of suspicious dermatological lesions and/or referral



Intralesional steroid injections for keloids and alopecia areata



Removal of minor lesions, skin tags, moles, warts, and verrucas with cryotherapy (liquid nitrogen)



General dermatology, specifically focusing on tropical dermatology

Nurse services



Routine childhood vaccinations



Phlebotomy



Influenza flu vaccinations



ECGs



Paediatric development



Minor illnesses and injuries



Ear syringing



Bedside tests (pregnancy, malaria, blood sugar, urine, etc.)



Minor wound care



Emergency Services



Any emergency patients will be managed by a medical team which includes the paramedics, clinic nurses, and the doctor on duty. Any patients that require transfer to hospital will be referred by the relevant hospital by the doctor on duty. The patient will be transferred by the paramedics in one of the SES ambulances.

Pharmacy



Pharmacy services have been outsourced to Westgate Pharmacies. Westgate can assist with all prescriptions, both local and imported medications.

Laboratory



SES has partnered with Metropolis Laboratory for all laboratory services. Metropolis runs the majority of samples in-country, with some specialised tests being completed at the Head Office in India.

X-Ray and Ultrasonography



Phillabs provides x-ray and ultrasound services at the Lusaka Clinic. X-ray services are not yet available at our Kitwe Clinic. A sonographer is available from the Kitwe Clinic on an appointment basis.

