

SES Lusaka & Kitwe Clinics: Scope of Services

Our SES Clinics provide the following services, among others

General



GP and family physicians



**Preventative and routine
services**



**Chronic disease
management**



Holistic care



Diabetic teaching



Nutritional services



**Exercise and obesity
counselling**



ECGs



Wellness medicals

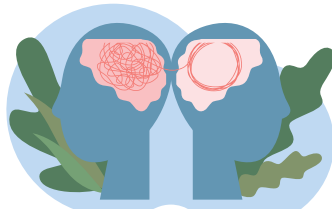


General paediatric and infant care

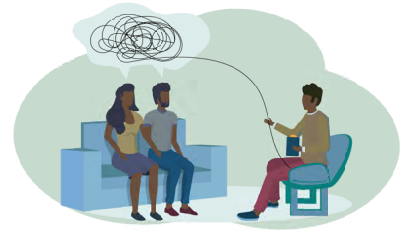
Mental Health



Stress management



**Onward referral to psychiatry
if required**



Relationship counselling



**Recognition and ongoing care of mood
and anxiety disorders**



**Recognition and onward referral, as
well as ongoing support, for alcohol and
substance addiction**

Men's Health

Age-specific men's annual medicals



Erectile dysfunction



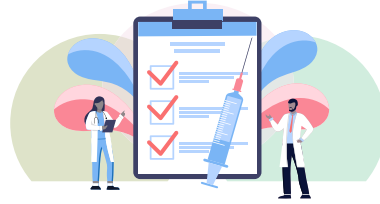
General sexual health



Dermatology



Biopsies of suspicious dermatological lesions and/or referral



Intralesional steroid injections for keloids and alopecia areata



Removal of minor lesions, skin tags, moles, warts, and veruccas with cryotherapy (liquid nitrogen)



General dermatology, specifically focusing on tropical dermatology

Nurse services



Routine childhood vaccinations



Influenza flu vaccinations



Paediatric development



Ear syringing



Minor wound care



Audiometry



Phlebotomy



ECGs



Minor illnesses and injuries



Bedside tests (pregnancy, malaria, blood sugar, urine, etc.)



Spirometry

Consultant Gynaecologist (Lusaka and Kitwe)



Gynaecological screening



Family planning



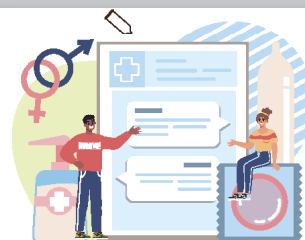
Antenatal care



Fertility planning and
baseline investigations



Conception planning and
advice



Sexual health screening
and advice



Acute gynaecological problems

Consultant Paediatrician (Lusaka only)



Paediatric development



Neurology



General paediatrics

Consultant Surgeons

(Lusaka and Kitwe)



Laceration repair



Suspicious lesion removal



Procedures under local anaesthetic

(Lusaka only)

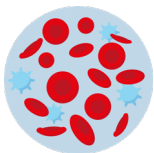


Circumcision in infants,
children and adults

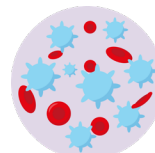


Vasectomies

Consultant Haematologist (Lusaka only)



Hereditary blood disorders



Cancers of the blood

Consultant Physiotherapist (Lusaka and Kitwe)



Musculoskeletal injuries



Chronic pain disorders

Consultant Orthopaedic Surgeon (Lusaka and Kitwe)



Bone injuries



Degenerative diseases

Consultant Neurologist (Lusaka only)

Brain and nerve-related disorders



Consultant Psychiatrist (Lusaka Only)

Specialized mental health care



Consultant Cardiologist (Lusaka only)

Heart & Blood Vessel disorders



Emergency Services



Any emergency patients will be managed by a medical team which includes the paramedics, clinic nurses, and the doctor on duty. Any patients that require transfer to hospital will be referred by the relevant hospital by the doctor on duty. The patient will be transferred by the paramedics in one of the SES ambulances.

Pharmacy



Pharmacy services have been outsourced to Westgate Pharmacies. Westgate can assist with all prescriptions, both local and imported medications.

Laboratory



SES has partnered with Metropolis Laboratory for all laboratory services. Metropolis runs the majority of samples in-country, with some specialised tests being completed at the Head Office in India.

X-Ray and Ultrasonography



Phillabs provides x-ray and ultrasound services at the Lusaka Clinic. X-ray services are not yet available at our Kitwe Clinic. A sonographer is available from the Kitwe Clinic on an appointment basis.

