

Benefit Schedule



ACTIVE HEALTH PLANS 2026

LOCAL HEALTH PLANS / REGIONAL HEALTH PLANS / INTERNATIONAL HEALTH PLANS





INTRODUCTION - KEY FEATURES

SES ACTIVE HEALTH PLANS AND BENEFITS



Emergency Evacuation, Treatment & Care

- Local road ambulance
- Local air ambulance
- International medical evacuation
- Emergency hospitalisation
- High care & Intensive care
- Travel & accommodation of a third party
- Repatriation to country of residence after international evacuation
- Repatriation of mortal remains, burial or cremation after international evacuation
- Home-based nursing care



Major Medical Care

- Kidney failure treatment
- Cancer diagnosis & treatment
- Organ Transplant
- Psychiatric treatment



Out-patient Benefits

- Medical doctor or specialist consultations
- Prescription Medication and medically indicated vaccination
- Over-the-counter medication
- X-rays (when requested by medical doctor)
- Pathology (when requested by medical doctor)
- Advanced imaging Pre-authorisation required
- COVID-19 Testing
- Prosthesis external
- Physio & Chiropractor sessions
- Chronic condition management



In-patient Benefits

- Elective Hospitalisation & Surgery
- Prosthesis internal
- Palliative care
- Rehabilitation (Post-Hospitalisation)
- Economy flight for in-patient elective treatment



Maternity Benefits

- Pre-natal consults
- Normal Delivery, Planned and Emergency Caesarian
- Newborn hospitalisation
- Complications during the pre-natal period & childbirth
- Birth defects & congenital abnormalities
- IVF



Wellness, Dental & Optical Benefits

- Wellness benefit
- Oral care & dental treatment
- Optical
- Nutritionist & Dietitian
- Under 5 Vaccinations
- Medical insurance travel benefit
- Funeral Cash Benefit



Optional Benefits & Limits

- Sports loading



The key feature indication is not a contract and does not include full details about your cover. Please refer to the Benefits Schedule for full cover limits.





CONTENTS

SES ACTIVE HEALTH PLANS AND BENEFITS

- Page 5  **Policy Overview**
- Page 6  **Major Medical Care**
- Page 7  **Emergency Evacuation, Treatment & Care**
- Page 9  **In-patient Benefits**
- Page 10  **Out-patient Benefits**
- Page 12  **Maternity Benefits**
- Page 13  **Wellness, Dental and Optical Benefits**
- Page 14  **Optional Benefits & Limits**





Emergency Evacuation, Treatment & Care

The SES Call Centre is operational 24/7 to dispatch Emergency medical care in order to insure your safety.



SHORT COMPARISON GUIDE

SES HEALTH PLANS AND BENEFITS

COMPARISON

The below cover indication is not a contract and does not include full details about your cover. Please refer to the Benefits Schedule for full cover limits.

LOCAL HEALTH PLANS

Accident & emergency insurance cover
OR
Comprehensive health insurance cover*

UP TO **USD 150,000 OVERALL LIMIT**

REGIONAL HEALTH PLANS

Accident & emergency insurance cover
OR
Comprehensive health insurance cover*

UP TO **USD 500,000 OVERALL LIMIT**

INTERNATIONAL HEALTH PLANS

Basic health insurance cover
OR
Comprehensive health insurance cover*

UP TO **USD 4,000,000 OVERALL LIMIT**

KEY BENEFITS	LOCAL HEALTH PLANS		REGIONAL HEALTH PLANS		INTERNATIONAL HEALTH PLANS		
	TANZANITE	AMETHYST+	SILVER	SAPPHIRE	CHROME	GOLD+	PLATINUM+
Major Medical	✗	✓	✗	✓	✓	✓	✓
Out-patient	✗	✓	✗	✓	✓	✓	✓
In-patient (Emergency)	✓	✓	✓	✓	✓	✓	✓
In-patient (Elective)	✗	✓	✗	✓	✓	✓	✓
Maternity	✗	✓	✗	✓	✗	✓	✓
Optical	✗	✓	✗	✓	✗	✓	✓
Dental	✗	✓	✗	✓	✗	✓	✓
Wellness	✗	✗	✗	✓	✓	✓	✓

*Cover only applies in Zambia.

*Cover applies within the country of residence and the region.

*Cover can be accessed worldwide, excluding North, Central and South America and Canada.





POLICY OVERVIEW

BENEFITS SCHEDULE

BENEFIT	LOCAL HEALTH PLANS		REGIONAL HEALTH PLANS		INTERNATIONAL HEALTH PLANS			
	HEALTH PLAN	TANZANITE	AMETHYST+	SILVER	SAPPHIRE	CHROME	GOLD+	PLATINUM+
Overall limit		USD 50,000	USD 150,000	USD 500,000	USD 500,000	USD 1,000,000	USD 2,000,000	USD 4,000,000
Area of cover		Treatment in Zambia only	In-patient & out-patient treatment in Zambia only (Only available for Groups of 10 employees or more)	Africa-wide Evacuation Only	Out-patient in the country of residence only. In-patient and Major Medical in the country of residence or India. Emergency evacuation to RSA.	Worldwide Treatment (excluding USA, Canada or South America). Claims paid at SES Network Rates	Worldwide Treatment (excluding USA, Canada or South America). Claims paid at SES Network Rates	Worldwide Treatment (excluding USA, Canada or South America)
Type of cover		Zambia Emergency Cover	Zambia Comprehensive	International Evacuation and Related Treatment	Zambia Comprehensive & Evacuation	Local & International Comprehensive & Evacuation	Local & International Comprehensive & Evacuation	Local & International Comprehensive & Evacuation
Excess¹		N/A	N/A	N/A	USD 100 for treatment in India	USD 175	USD 175	No Excess
Hospital network		Tier 2	Tier 2	Tier 1 - Stabilisation only	Tier 1	Tier 1	Tier 1	Tier 1

1: Excess - payable for all elective international benefits per condition.

2: Excess fee of US\$250 is payable when a member chooses a provider outside of our service provider network





MAJOR MEDICAL BENEFITS

BENEFITS SCHEDULE

BENEFIT	LOCAL HEALTH PLANS		REGIONAL HEALTH PLANS		INTERNATIONAL HEALTH PLANS			
	HEALTH PLAN	TANZANITE	AMETHYST+	SILVER	SAPPHIRE	CHROME	GOLD+	PLATINUM+
Kidney failure treatment								
Cancer diagnosis & treatment ²		USD 50,000		Paid up to overall limit (India and Zambia only)	Paid up to overall limit	Paid up to overall limit	Paid up to overall limit	
Organ Transplant	N/A		N/A					
Psychiatric treatment ³		N/A		USD 2,000	USD 5,000	USD 5,000	USD 8,000 (Including developmental & learning difficulties management)	
HIV Treatment ⁴	N/A	USD 1,000	N/A	USD 2,000	USD 8,000	USD 8,000	USD 10,000	

2: Cancer diagnosis & treatment: please refer to the applicable terms and conditions.

3: Psychiatric treatment includes in-patient and out-patient treatment.

4: HIV Treatment: please refer to the applicable terms and conditions.





EMERGENCY EVACUATION, TREATMENT & CARE

BENEFITS SCHEDULE

BENEFIT	LOCAL HEALTH PLANS		REGIONAL HEALTH PLANS		INTERNATIONAL HEALTH PLANS			
	HEALTH PLAN	TANZANITE	AMETHYST+	SILVER	SAPPHIRE	CHROME	GOLD+	PLATINUM+
Local road / Local air ambulance		Paid up to overall limit	Paid up to overall limit	Paid up to overall limit	Paid up to overall limit	Paid up to overall limit	Paid up to overall limit	Paid up to overall limit
International medical evacuation ⁵		N/A	N/A					
Emergency hospitalisation		Emergency medical diagnosis & treatment charges only	Paid up to General ward	Paid up to Shared ward	Paid up to Shared ward	Paid up to the overall limit. Private room subject to availability	Paid up to overall limit. Private room subject to availability	Paid up to the overall limit. Private room subject to availability
High care & Intensive care		USD 4000	Paid up to overall limit	Paid up to overall limit	Paid up to overall limit	Paid up to overall limit	Paid up to overall limit	Paid up to overall limit
Travel & accommodation of a third party ⁶		Max USD 40/night rebate for costs incurred. Max 30 days emergency only. Parental accommodation for patients under 18yrs. Only travel for one companion in an emergency evacuation	Max USD 100/night rebate for costs incurred. Max 30 days emergency only. Parental accommodation for patients under 18yrs. Only travel for one companion in an emergency evacuation	Max USD 120/night rebate for costs incurred. Max 30 days emergency only. Accommodation for one immediate family member. Only travel for one companion in an emergency evacuation	Max USD 120/night rebate for costs incurred. Max 30 days emergency only. Accommodation for one immediate family member. Only travel for one companion in an emergency evacuation	Max USD 150/night rebate for costs incurred. Max 30 days emergency only. Accommodation for one immediate family member. Only travel for one companion in an emergency evacuation	Max USD 170/night rebate for costs incurred. Max 30 days emergency only. Accommodation for one immediate family member. Only travel for one companion in an emergency evacuation	Max USD 200/night rebate for costs incurred. Max. 30 days emergency only. Accommodation for one immediate family member. Only travel for one companion in an emergency evacuation
Repatriation to country of residence after international evacuation (commercial flights only)				USD 5,000	USD 5,000	USD 11,000	USD 11,000	USD 25,000 (To Country of citizenship)
Repatriation of mortal remains, burial or cremation after international evacuation		N/A	N/A					
Home-based nursing care				N/A	Covered up to 30 days up to USD 200 per day. Pre-auth required In-country only	Covered up to 30 days up to USD 200 per day. Pre-auth required In-country only	Covered up to 30 days up to USD 200 per day. Pre-auth required In-country only	Covered up to 30 days up to USD 200 per day. Pre-auth required In-country only

5: International Medical Evacuation limited to 1 evacuation per condition per benefit year

5: International Medical Evacuation has no excess applied

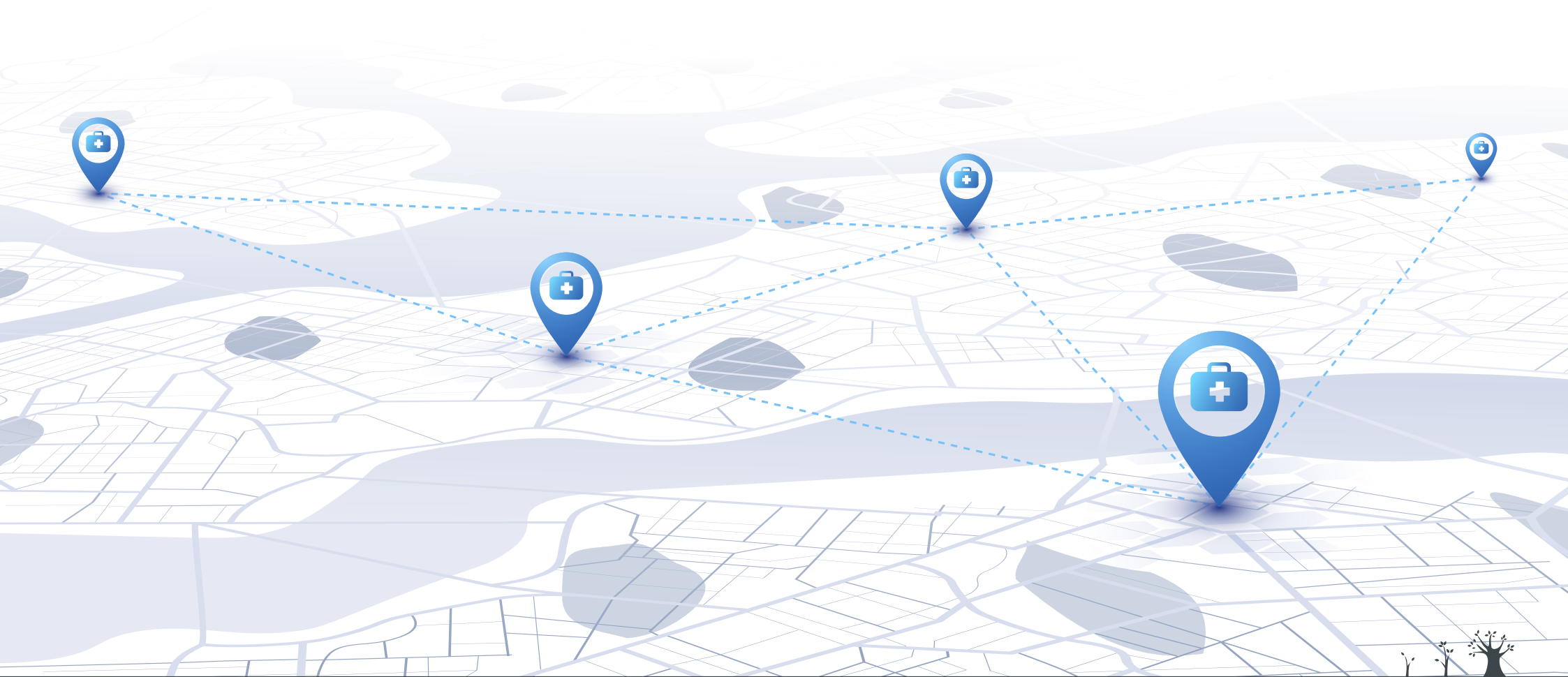
5: International Medical Evacuation is applicable to immediately life or limb threatening conditions

6: Travel and Accommodation of a third party: please refer to the applicable terms and conditions



Get immediate emergency medical response when you need it most

SES has a large service provider network in Zambia, South Africa & India, ensuring that we are able to refer our clients to the best possible facilities.





IN-PATIENT BENEFITS

BENEFITS SCHEDULE

BENEFIT	LOCAL HEALTH PLANS		REGIONAL HEALTH PLANS		INTERNATIONAL HEALTH PLANS			
	HEALTH PLAN	TANZANITE	AMETHYST+	SILVER	SAPPHIRE	CHROME	GOLD+	PLATINUM+
Elective Hospitalisation & Surgery⁷			Paid up to overall limit. General ward	N/A	Paid up to overall limit. Semi-private ward (India and Zambia only)	Paid up to overall limit. Private ward	Paid up to overall limit Private room subject to availability	Paid up to overall limit Private room subject to availability
Prosthesis internal			USD 10,000	USD 20,000	USD 20,000	USD 50,000	USD 50,000	USD 100,000
Palliative care					20 days per medical case (In-patient)	30 days per medical case (In-patient)	30 days per medical case (In-patient)	50 days per medical case (In-patient)
Rehabilitation (Post-Hospitalisation) Requires Pre-authorisation	N/A				USD 20,000	USD 35,000	USD 35,000	USD 40,000
Economy flight for in-patient elective treatment (Where in country treatment is deemed inappropriate, SES doctor's pre-approval is required)				N/A		N/A	N/A	Economy class airfare to South Africa only

7: In-patient care has a 3 month waiting period on initial application





OUT-PATIENT BENEFITS

BENEFITS SCHEDULE

BENEFIT	LOCAL HEALTH PLANS		REGIONAL HEALTH PLANS		INTERNATIONAL HEALTH PLANS			
	HEALTH PLAN	TANZANITE	AMETHYST+	SILVER	SAPPHIRE	CHROME	GOLD+	PLATINUM+
Medical doctor or specialist consultations	N/A	USD 1,000	N/A	USD 1,200	USD 1,800	USD 1,800	Paid up to overall limit	
Prescription Medication and medically indicated vaccination	N/A	USD 1000	N/A	USD 1,000	USD 1,600	USD 1,600		
Over-the-counter medication	N/A	N/A	N/A	USD 200	USD 200	USD 200		
X-rays (when requested by medical doctor)	N/A	USD 400	N/A	USD 5,000	Paid up to overall limit	Paid up to overall limit		
Pathology (when requested by medical doctor)	N/A	USD 525	N/A					
Advanced imaging Pre-authorisation required	N/A	USD 1,200	N/A	USD 1,400	USD 1,000	USD 1,000		USD 1,000
External devices & medical equipment ⁸	USD 600	USD 600	USD 600	USD 600				
Physio & Chiropractor sessions	N/A	USD 300	N/A	USD 500	USD 800	USD 800		USD 800
Chronic condition management	N/A	USD 1,000	N/A	USD 1,500	USD 3,000	USD 3,000		USD 5,000

All out-patient treatments require pre-authorization in order to assure that our members are covered for their chosen procedures & checkups. Call our call centre agents on **737** to pre-authorise your treatment today.

8: External devices & medical equipment includes medically indicated devices.





Comprehensive care for you and your little one



MATERNITY BENEFITS⁹

BENEFITS SCHEDULE

BENEFIT	LOCAL HEALTH PLANS		REGIONAL HEALTH PLANS		INTERNATIONAL HEALTH PLANS			
	HEALTH PLAN	TANZANITE	AMETHYST+	SILVER	SAPPHIRE	CHROME	GOLD+	PLATINUM+
Pre-natal consults		USD 800		USD 1000 Zambia only			USD 1000	USD 1000
Normal Delivery, Planned and Emergency Caesarian		USD 1,000		USD 1500 Zambia only			USD 5000	USD 7000
Newborn hospitalisation	N/A	USD 6,000	N/A	USD 10,000 Zambia only			USD 100,000	USD 100,000
Complications during the pre-natal period & childbirth							Paid up to overall limit	Paid up to overall limit
Birth defects & congenital abnormalities	N/A	USD 2,000	N/A	USD 2,000 Zambia only			USD 15,000	USD 25,000
IVF ¹⁰	N/A	N/A	N/A	N/A			N/A	USD 6,500 subject to T's and C's ¹⁰

9: Maternity benefits have a 10-month waiting period for new joiners

10: IVF T's and C's: SA & India only

Waiting period of 8 months since joining Platinum+.

Limited to 3 cycles per lifetime (a limit of US\$6,500 per membership year)

Age of members 39 and below.

Platinum+ members only.

Pre-approved by SES' doctors with medical justification.





WELLNESS, DENTAL AND OPTICAL BENEFITS

BENEFITS SCHEDULE

BENEFIT	LOCAL HEALTH PLANS		REGIONAL HEALTH PLANS		INTERNATIONAL HEALTH PLANS		
	HEALTH PLAN	TANZANITE	AMETHYST+	SILVER	SAPPHIRE	CHROME	GOLD+
Preventative Health Screening benefit ¹¹	N/A	N/A	N/A	USD 200 SES Zambia Clinics only	USD 200 SES Clinics only	USD 1,000 ¹² Zambia or South Africa	USD 2,000 ¹² Worldwide
Oral care & dental treatment	N/A	USD 200	N/A	USD 400 Zambia only	N/A	USD 900	USD 1,200
Optical ¹³	N/A	USD 150	N/A	USD 250 Zambia only	N/A	USD 300	USD 400
Nutritionist & Dietitian (Requires referral from SES doctors)	N/A	N/A	N/A	3 Consults Zambia only	N/A	5 Consults	5 Consults
Medically Indicated Vaccinations	N/A	USD 300	N/A	USD 500 Zambia only	USD 500	USD 500	USD 500
Funeral Cash Benefit	USD 500	USD 500	USD 1,000	USD 1,000	USD 1,000	USD 1,500	USD 1,500

11: Preventative Health Screening benefit applies every two years for clients over the age of 18

12: Gastric bypass surgery - lifetime benefit with a 3 year waiting period up to wellness limits

13: Optical Benefits - Frames have an event limit of once every 2 years, whereas lenses and consultations are covered up to the annual benefit limit





OPTIONAL BENEFITS & LIMITS

BENEFITS SCHEDULE

BENEFIT	LOCAL HEALTH PLANS		REGIONAL HEALTH PLANS		INTERNATIONAL HEALTH PLANS		
HEALTH PLAN	TANZANITE	AMETHYST+	SILVER	SAPPHIRE	CHROME	GOLD+	PLATINUM+
High-risk activity loading ¹⁴	USD 50,000	USD 100,000	USD 100,000	USD 100,000	USD 100,000	USD 100,000	USD 150,000

14: High-risk activity loading - USD 200 for USD 50,000 loading, USD 400 for USD 100,000 loading and USD 600 for USD 150,000 loading.



Protecting health, Securing lives.



Service and Administration Contact Details

If we can help you with more information about our product offerings, or if you would like to meet with one of our product experts, please contact us:

SES 24/7 Zambia / Pre-Authorisation
Tel: 737

Unisure Assist South Africa
Tel: +27 87 238 2600

SES Claims

Email: payandclaim@ses-unisure.com

SES

Tel: +260 962 740 300 / +260 977 770 302

WhatsApp: +260 962 740 300

Central email enquiries: info@ses-unisure.com

Please specify within your query which country or area your enquiry relates to

[ses-unisure.com](https://www.ses-unisure.com)

SES Limited is PACRA registered. SES Limited is licensed to sell insurance policies through the Pensions and Insurance Authority (PIA) License Number: 2023/LT/02

